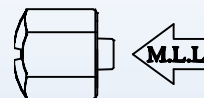


Closed cap male luer lock
Material: ABS / STD Pack: 20.000 pcs

C10304121 - ETO - Radiation (White)



- Dimension: "mm"
- Drawing scale: 1:1

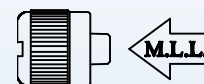
Closed cap male luer lock
STD Pack: 30.000 pcs

C10402120 - ETO - Radiation (Natural) LDPE

C10402121 - ETO - Radiation (White) LDPE

C10404121 - ETO - Radiation (White) ABS

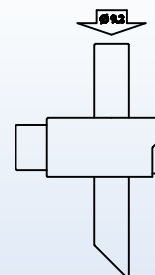
C10404145 - ETO - Radiation (Green) ABS



- Dimension: "mm"
- Drawing scale: 1:1

Drainage tap for tube Ø 9.2 mm
Material: PVC - HDPE - SILICON / STD Pack: 2.000 pcs

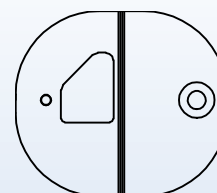
B90002B - ETO (White + Blue)



- Dimension: "mm"
- Drawing scale: 1:2

Rigid support for stopcock
Material: PE / STD Pack: 3.000 pcs

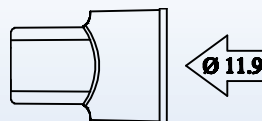
B90020B - ETO - Radiation (Blue)



- Dimension: "mm"
- Drawing scale: 1:2

Vented cap for rotating male luer lock
and dialyser connector (for item A001, C109)
Material: LDPE / STD Pack: 10.000 pcs

C10602020 - ETO - Radiation (Neutral)
C10602022 - ETO - Radiation (Red)
C10602023 - ETO - Radiation (Blue)



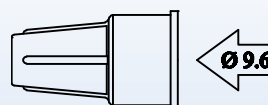
Vented cap for 1 way spike
(for spike C134)
Material: LDPE / STD Pack: 10.000 pcs

C16502020 - ETO - Radiation (Neutral)



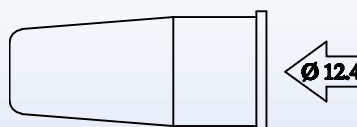
Vented cap for fixed male luer lock
(for item C133)
Material: LDPE / STD Pack: 15.000 pcs

C16702130 - ETO - Radiation (Neutral)



Protective cap, 12.4 mm diameter
(for catheter cone Ø 8.0 / Ø 9.8 mm)
Material: LDPE / STD Pack: 5.000 pcs

B10002B - ETO - Radiation (Neutral)



Protective cap, 9.8 mm diameter
(for catheter cone Ø 6.0 / Ø 6.8 mm)
Material: LDPE / STD Pack: 7.000 pcs

B90001B - ETO - Radiation (Neutral)

